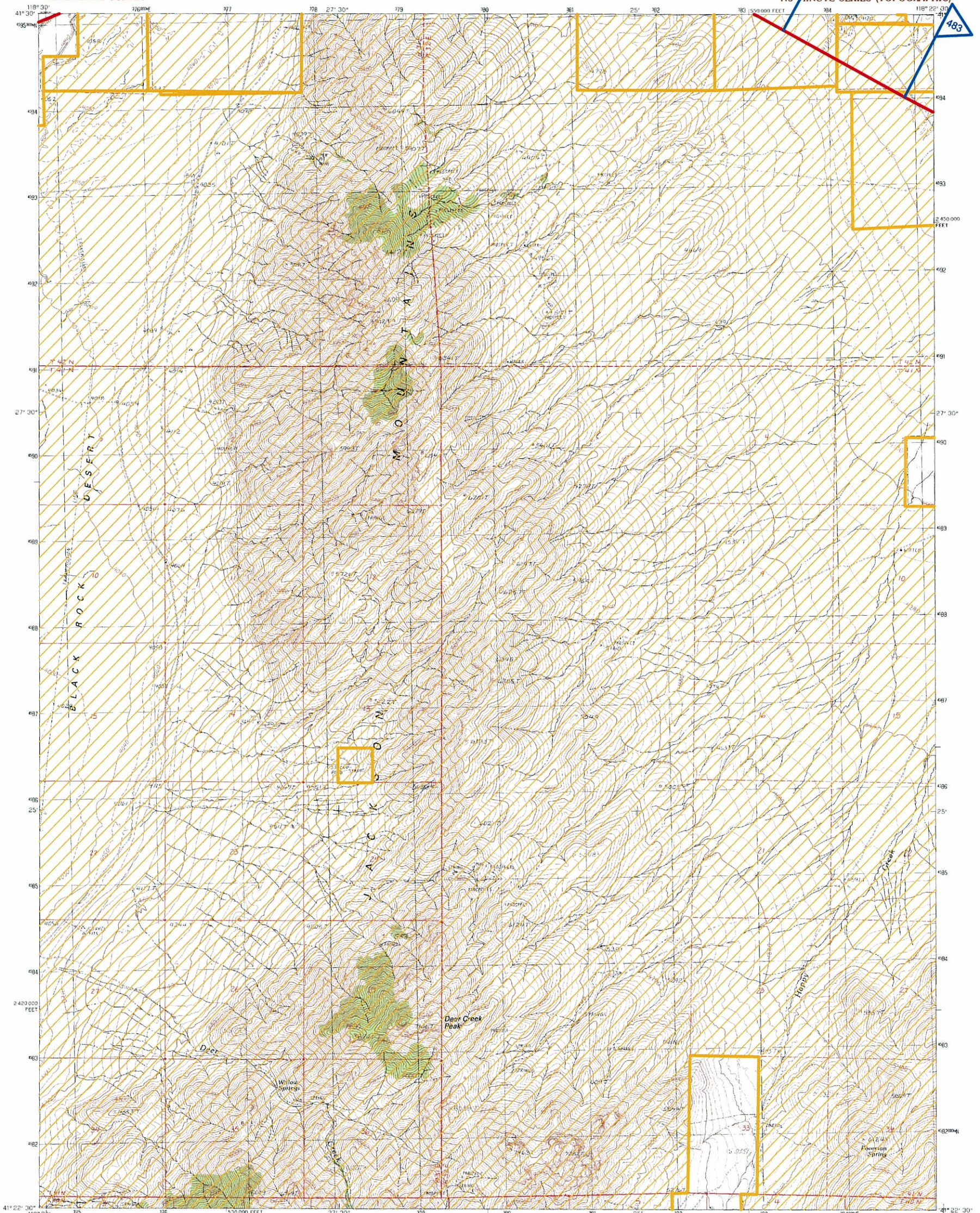


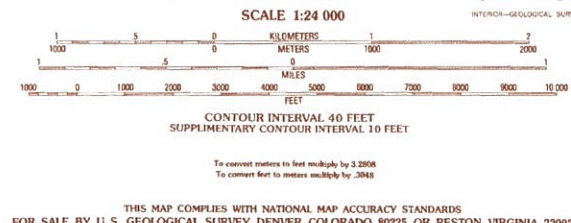
UNITED STATES
DEPARTMENT OF THE INTERIOR
GEOLOGICAL SURVEY

DEER CREEK PEAK QUADRANGLE
NEVADA-HUMBOLDT CO.
7.5 MINUTE SERIES (TOPOGRAPHIC)



PRODUCED BY THE UNITED STATES GEOLOGICAL SURVEY
CONTROL BY USGS AND NOS/NOAA
COMPILED FROM AERIAL PHOTOGRAPHS TAKEN.....1959
REVISED FROM AERIAL PHOTOGRAPHS TAKEN.....1986
FIELD CHECKED.....1988. MAP EDITED.....1990
PROJECTION.....TRANSVERSE MERCATOR
GRID.....1000-METER UNIVERSAL TRANSVERSE MERCATOR
UTM GRID DECLINATION.....NEVADA, WEST ZONE
10,000-FOOT STATE GRID TICKS.....16°30' WEST
1990 MAGNETIC NORTH DECLINATION.....16°30' EAST
VERTICAL DATUM.....NATIONAL GEODETIC VERTICAL DATUM OF 1929
HORIZONTAL DATUM.....1927 NORTH AMERICAN DATUM
To place on the predicted North American Datum of 1983,
move the projection lines as shown by dashed corner ticks
(15 meters north and 83 meters east)
There may be private inholdings within the boundaries of any
Federal or State reservations shown on this map
Where omitted, land lines have not been established

PROVISIONAL MAP
Produced from original
manuscript drawings. Informa-
tion shown as of date of
field check.



QUADRANGLE LOCATION

1	2	3
4	5	6
7	8	

ADJOINING 7.5 QUADRANGLE NAMES

- Duke Canyon
- Quinn River Crossing
- Marshall Spring
- Deer Creek Slough
- Shuttle Hill
- Hobo Canyon
- Plover Peak
- Beale Creek Ranch

ROAD LEGEND
Improved Road
Unimproved Road
Trail
Interstate Route U.S. Route State Route

DEER CREEK PEAK, NEVADA
PROVISIONAL EDITION 1990
41118-D4-TF-024

LEGEND

- Proposed Ruby Pipeline
- Access Roads
- Mile Posts
- Bureau of Land Management Land

FERC FILING
July 17, 2009



FERC ROUTE MAP

RUBY
NEVADA
Sheet 83

****NOTE****
LAND DATA IS FOR REFERENCE PURPOSES ONLY.
NOT INTENDED FOR LEGAL DESCRIPTION.