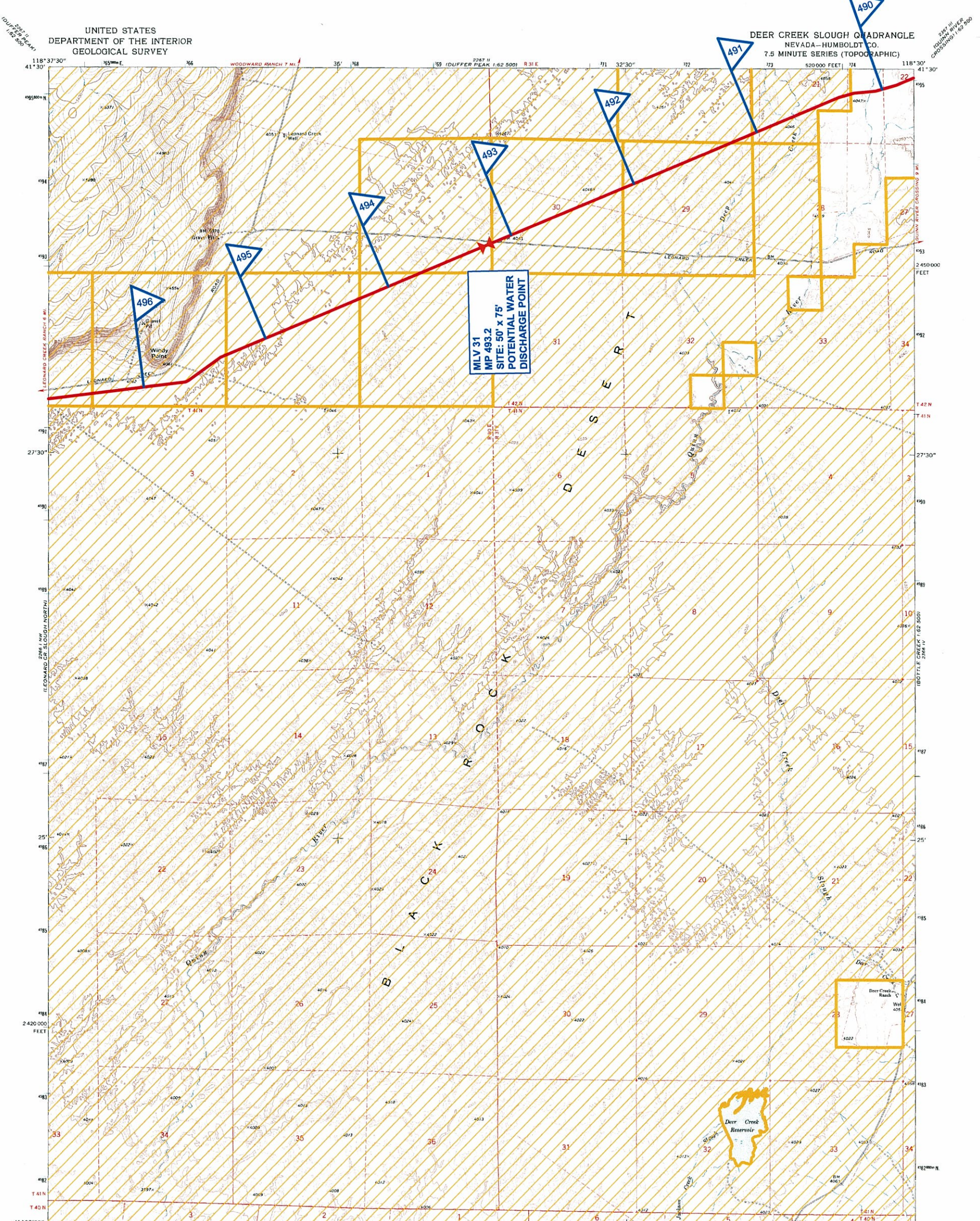
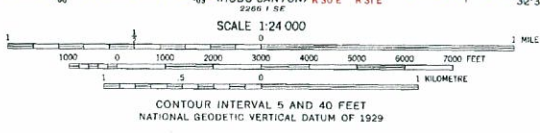


UNITED STATES
DEPARTMENT OF THE INTERIOR
GEOLOGICAL SURVEY

DEER CREEK SLOUGH QUADRANGLE
NEVADA—HUMBOLDT CO.
7.5 MINUTE SERIES (TOPOGRAPHIC)



Mapped, edited, and published by the Geological Survey
Control by USGS and NOS/NOAA
Topography by photogrammetric methods from aerial
photographs taken 1971. Field checked 1972
Projection and 10,000-foot grid ticks: Nevada coordinate
system, west zone (transverse Mercator)
1000-metre Universal Transverse Mercator grid ticks,
zone 11, shown in blue. 1927 North American datum
Fine red dashed lines indicate selected fence lines
Where omitted, land lines have not been established
or are not shown because of insufficient data



ROAD CLASSIFICATION
Primary highway, hard surface
Secondary highway, hard surface
Unimproved road
Interstate Route
U.S. Route
State Route
Light duty road, hard or improved surface
Unimproved road

THIS MAP COMPLIES WITH NATIONAL MAP ACCURACY STANDARDS
FOR SALE BY U.S. GEOLOGICAL SURVEY, DENVER, COLORADO 80225, OR RESTON, VIRGINIA 22092
A FOLDER DESCRIBING TOPOGRAPHIC MAPS AND SYMBOLS IS AVAILABLE ON REQUEST

DEER CREEK SLOUGH, NEV.
N4122.5—W11830/7.5
1972

LEGEND

- Proposed Ruby Pipeline
- Main Line Valves
- Mile Posts
- Bureau of Land Management Land

FERC FILING
July 17, 2009



FERC ROUTE MAP

RUBY
NEVADA
Sheet 85

****NOTE****
LAND DATA IS FOR REFERENCE PURPOSES ONLY.
NOT INTENDED FOR LEGAL DESCRIPTION.