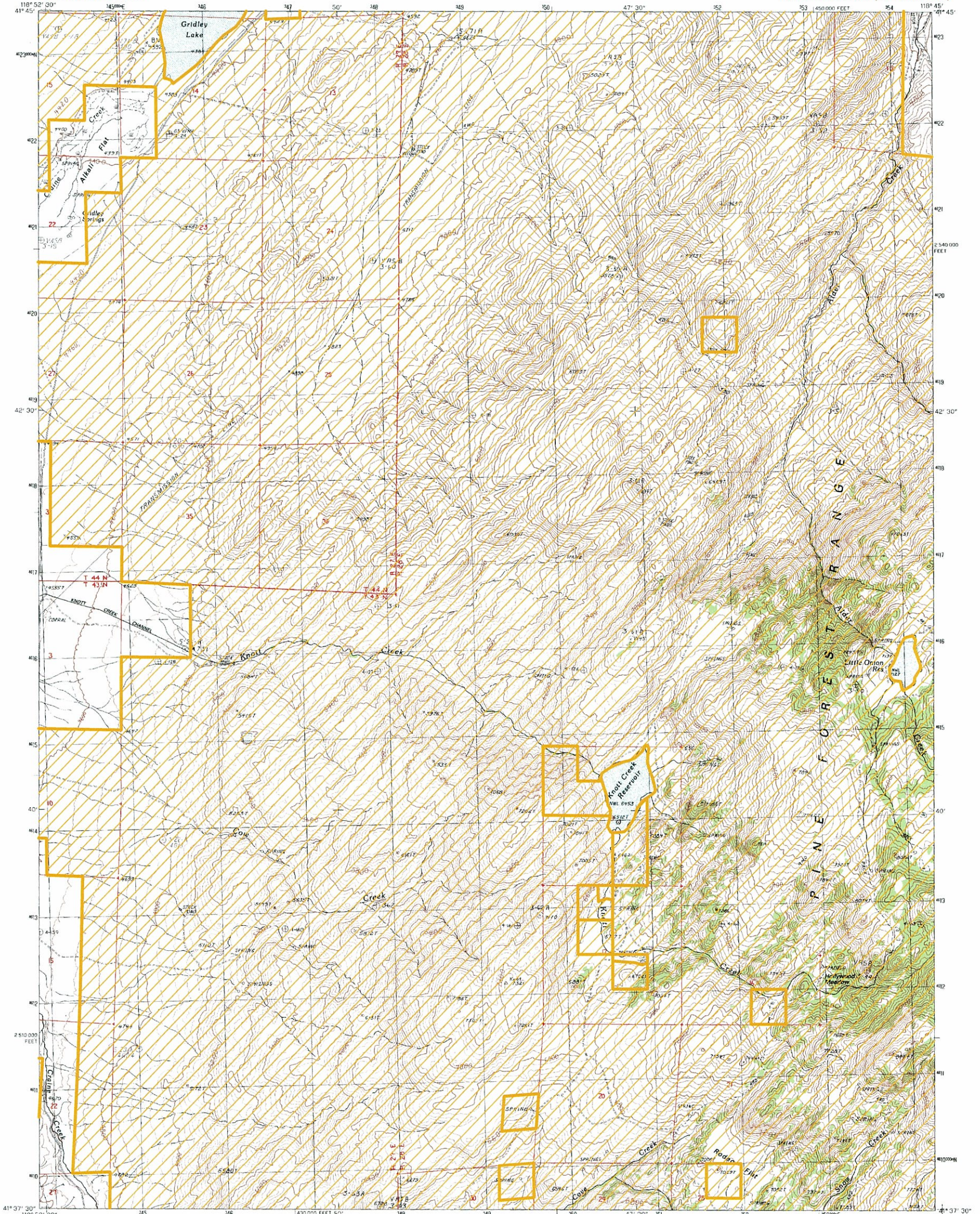


UNITED STATES  
DEPARTMENT OF THE INTERIOR  
GEOLOGICAL SURVEY

KNOTT CREEK QUADRANGLE  
NEVADA-HUMBOLDT CO.  
7.5 MINUTE SERIES (TOPOGRAPHIC)



PRODUCED BY THE UNITED STATES GEOLOGICAL SURVEY  
CONTROL BY USGS AND NOS/NOAA  
COMPILED FROM AERIAL PHOTOGRAPHS TAKEN 1968  
REVISED FROM AERIAL PHOTOGRAPHS TAKEN 1985-86  
FIELD CHECKER 1988 MAP EDITED 1989  
PROJECTION TRANSVERSE MERCATOR  
GRID 1000 METER UNIVERSAL TRANSVERSE MERCATOR ZONE 11  
10,000 FOOT STATE GRID TICKS NEVADA WEST ZONE  
UTM GRID DECLINATION 1-12 WEST  
1980 MAGNETIC NORTH DECLINATION 16-30 EAST  
VERTICAL DATUM NATIONAL GEODETIC VERTICAL DATUM OF 1929  
HORIZONTAL DATUM 1927 NORTH AMERICAN DATUM  
To place on the predicted North American Datum of 1983,  
move the projection lines as shown by dashed corner ticks  
(16 meters north and 84 meters east)  
There may be private inholdings within the boundaries of any  
Federal or State reservations shown on this map  
Where omitted, land lines have not been established

**PROVISIONAL MAP**  
Produced from original  
manuscript drawings. Informa-  
tion shown as of date of  
field check.

SCALE 1:24 000  
1 0 1000 2000 3000 4000 5000 6000 7000 8000 9000 10,000  
KILOMETERS  
METERS  
1000 0 1000 2000 3000 4000 5000 6000 7000 8000 9000 10,000  
FEET  
CONTOUR INTERVAL 40 FEET  
SUPPLEMENTARY CONTOUR INTERVAL 20 FEET  
To convert meters to feet multiply by 3.2808  
To convert feet to meters multiply by .3048  
THIS MAP COMPLES WITH NATIONAL MAP ACCURACY STANDARDS  
FOR SALE BY U.S. GEOLOGICAL SURVEY  
DENVER, COLORADO 80225, OR RESTON, VIRGINIA 22092

QUADRANGLE LOCATION

1	2	3	1 McGee Mountain
4	5	4 Knott Creek Ranch	2 Alder Creek Ranch
6	7	6 Malho Canyon Spring	3 Nickerson Canyon
	8	8 Bishop Peak	5 Knott Creek Ranch

ADJOINING 7.5' QUADRANGLE NAMES

ROAD LEGEND  
Improved Road  
Unimproved Road  
Trail  
Interstate Route U.S. Route State Route  
KNOTT CREEK, NEVADA  
PROVISIONAL EDITION 1990  
41118-F7-TF-024

**LEGEND**

Bureau of Land Management Land

**\*\*NOTE\*\***  
LAND DATA IS FOR REFERENCE PURPOSES ONLY.  
NOT INTENDED FOR LEGAL DESCRIPTION.

**FERC FILING**  
July 17, 2009

**RUBY PIPELINE LLC**

**FERC ROUTE MAP**

**RUBY NEVADA**  
Sheet 88A