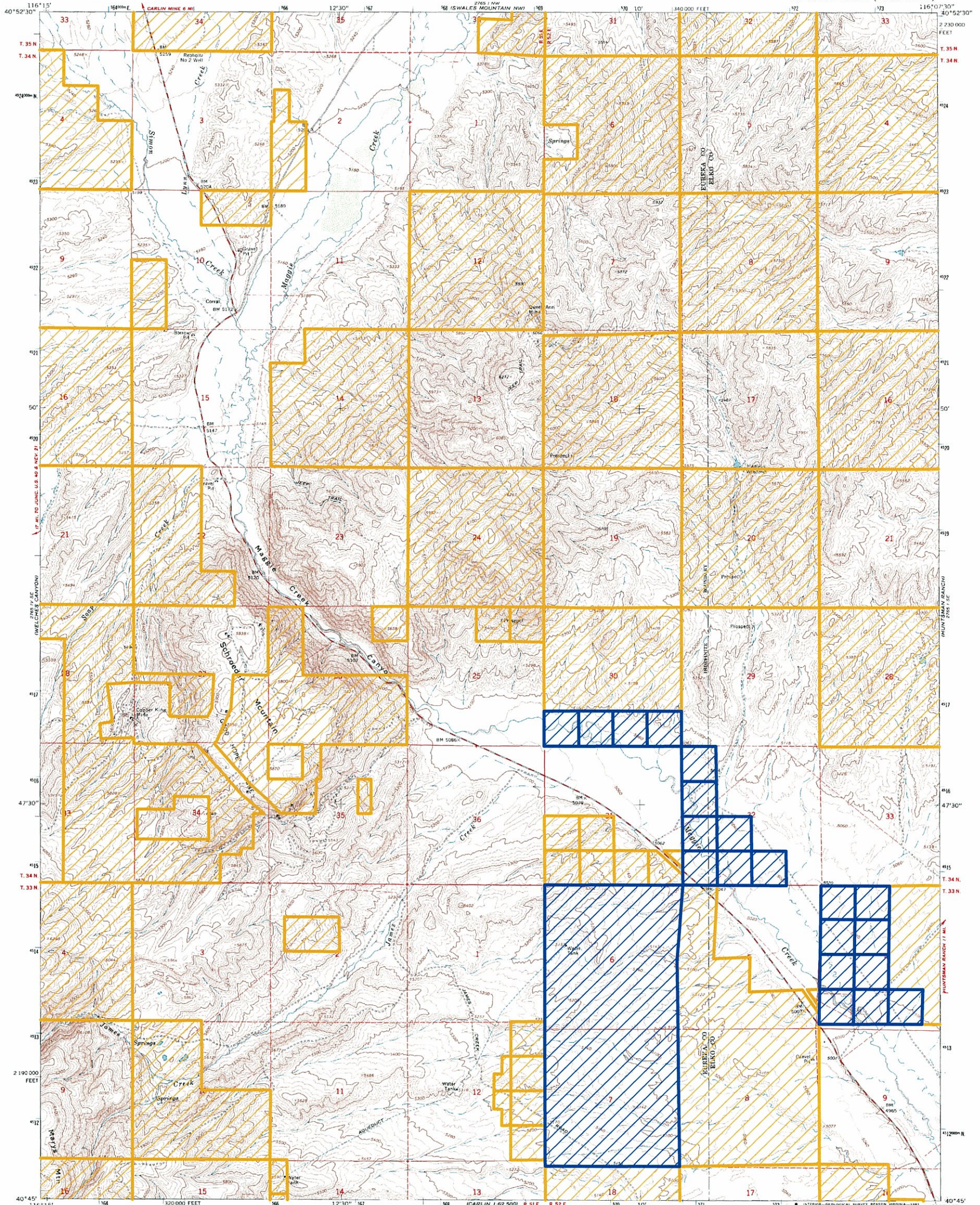
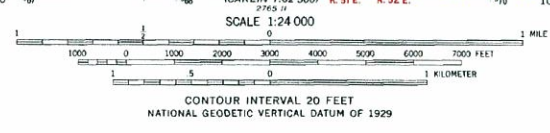
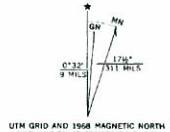


UNITED STATES
DEPARTMENT OF THE INTERIOR
GEOLOGICAL SURVEY

SCHROEDER MTN. QUADRANGLE
NEVADA
7.5 MINUTE SERIES (TOPOGRAPHIC)



Mapped, edited, and published by the Geological Survey
Control by USGS and USC&GS
Topography by photogrammetric methods from aerial
photographs taken 1966. Field checked 1968
Polyconic projection. 1927 North American datum
10,000-foot grid based on Nevada coordinate system, east zone
1000-meter Universal Transverse Mercator grid ticks,
zone 11, shown in blue
To place on the predicted North American Datum 1983,
move the projection lines 13 meters north and
77 meters east as shown by dashed corner ticks
Fine red dashed lines indicate selected fence lines



ROAD CLASSIFICATION
Secondary highway, all weather. Light-duty road, all weather,
hard surface. Improved surface.
Unimproved road, fair or dry
weather

SCHROEDER MTN., NEV.
N4045-W11607.5/7.5
1968

THIS MAP COMPLIES WITH NATIONAL MAP ACCURACY STANDARDS
FOR SALE BY U. S. GEOLOGICAL SURVEY, DENVER, COLORADO 80225, OR RESTON, VIRGINIA 22092
A FOLDER DESCRIBING TOPOGRAPHIC MAPS AND SYMBOLS IS AVAILABLE ON REQUEST

LEGEND

- Bureau of Land Management Land
- State Land

****NOTE****
LAND DATA IS FOR REFERENCE PURPOSES ONLY.
NOT INTENDED FOR LEGAL DESCRIPTION.

FERC FILING
July 17, 2009



FERC ROUTE MAP

RUBY
NEVADA
Sheet 60D