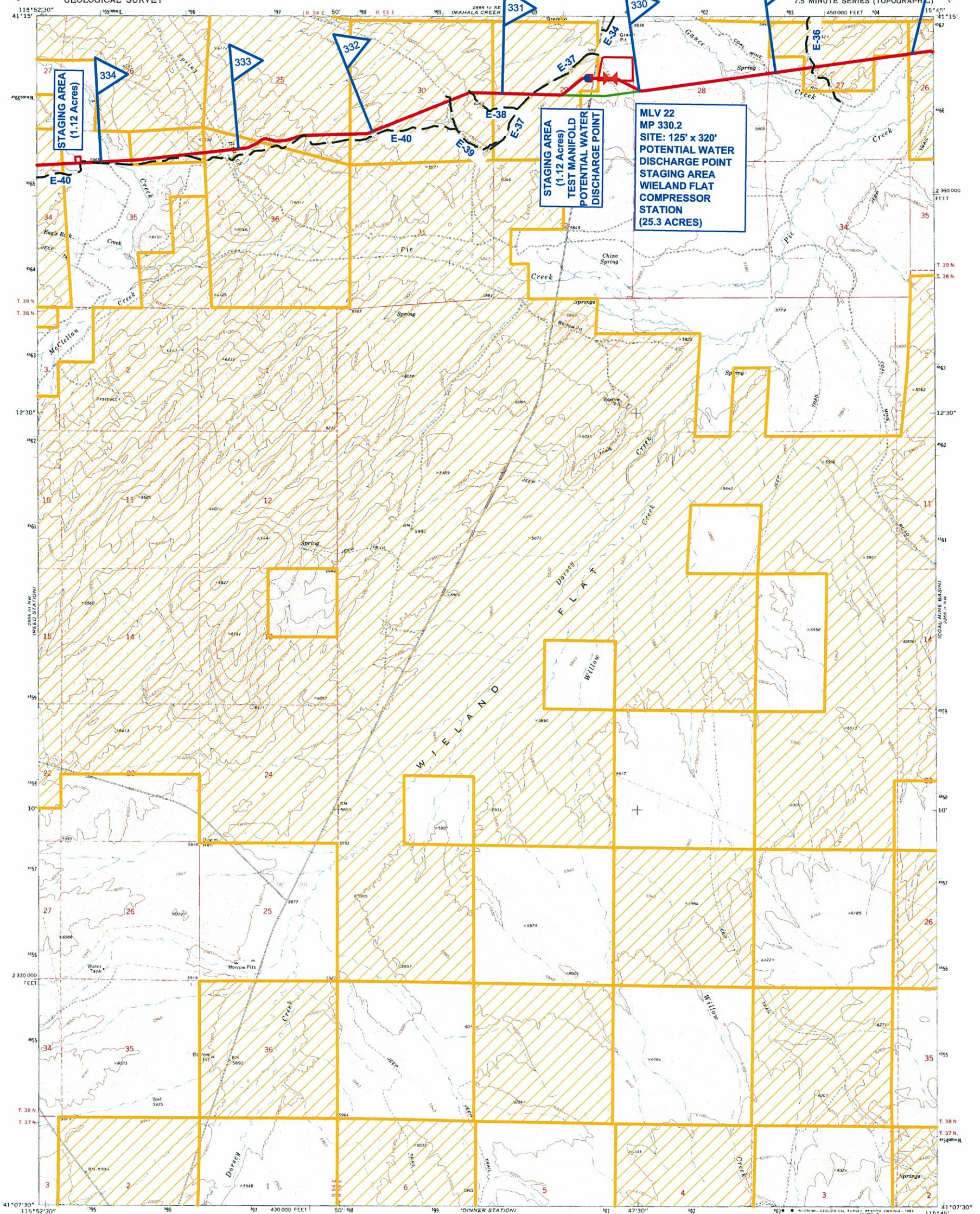
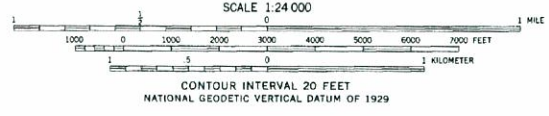
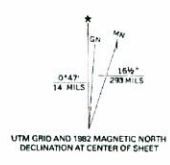


UNITED STATES
DEPARTMENT OF THE INTERIOR
GEOLOGICAL SURVEY



Mapped, edited, and published by the Geological Survey
Control by USGS and NGS/NOAA
Topography by photogrammetric methods from aerial
photographs taken 1968. Field checked 1971
Projection and 10,000-foot grid ticks: Nevada coordinate
system, east zone (transverse Mercator)
1000-meter Universal Transverse Mercator grid ticks,
zone 11, shown in blue. 1927 North American Datum
To place on the predicted North American Datum 1983,
move the projection lines 13 meters north and
76 meters east as shown by dashed corner ticks
Fine red dashed lines indicate selected fence lines
Certain land lines are omitted because of insufficient data



THIS MAP COMPLIES WITH NATIONAL MAP ACCURACY STANDARDS
FOR SALE BY U. S. GEOLOGICAL SURVEY, DENVER, COLORADO 80225, OR RESTON, VIRGINIA 22092
A FOLDER DESCRIBING TOPOGRAPHIC MAPS AND SYMBOLS IS AVAILABLE ON REQUEST

ROAD CLASSIFICATION

Primary highway, hard surface	Light duty road, hard or improved surface
Secondary highway, hard surface	Unimproved road
Interstate Route	U. S. Route
	State Route

WIELAND FLAT, NEV.
N4107.5—W11545/7.5
1971
PHOTO REVISIONED 1982
DMA 2888 (1) NS—SERIES V838

Revisions shown in purple compiled from aerial photographs taken 1980 and other source data. This information not field checked. Map edited 1982.

LEGEND

- Proposed Ruby Pipeline
- Previously Proposed Pipeline
- Access Roads
- Staging Areas / Sites
- Main Line Valves
- Mile Posts
- Bureau of Land Management Land

****NOTE****
LAND DATA IS FOR REFERENCE PURPOSES ONLY.
NOT INTENDED FOR LEGAL DESCRIPTION.

FERC FILING
July 17, 2009

RUBY PIPELINE LLC

FERC ROUTE MAP

RUBY NEVADA
Sheet 58