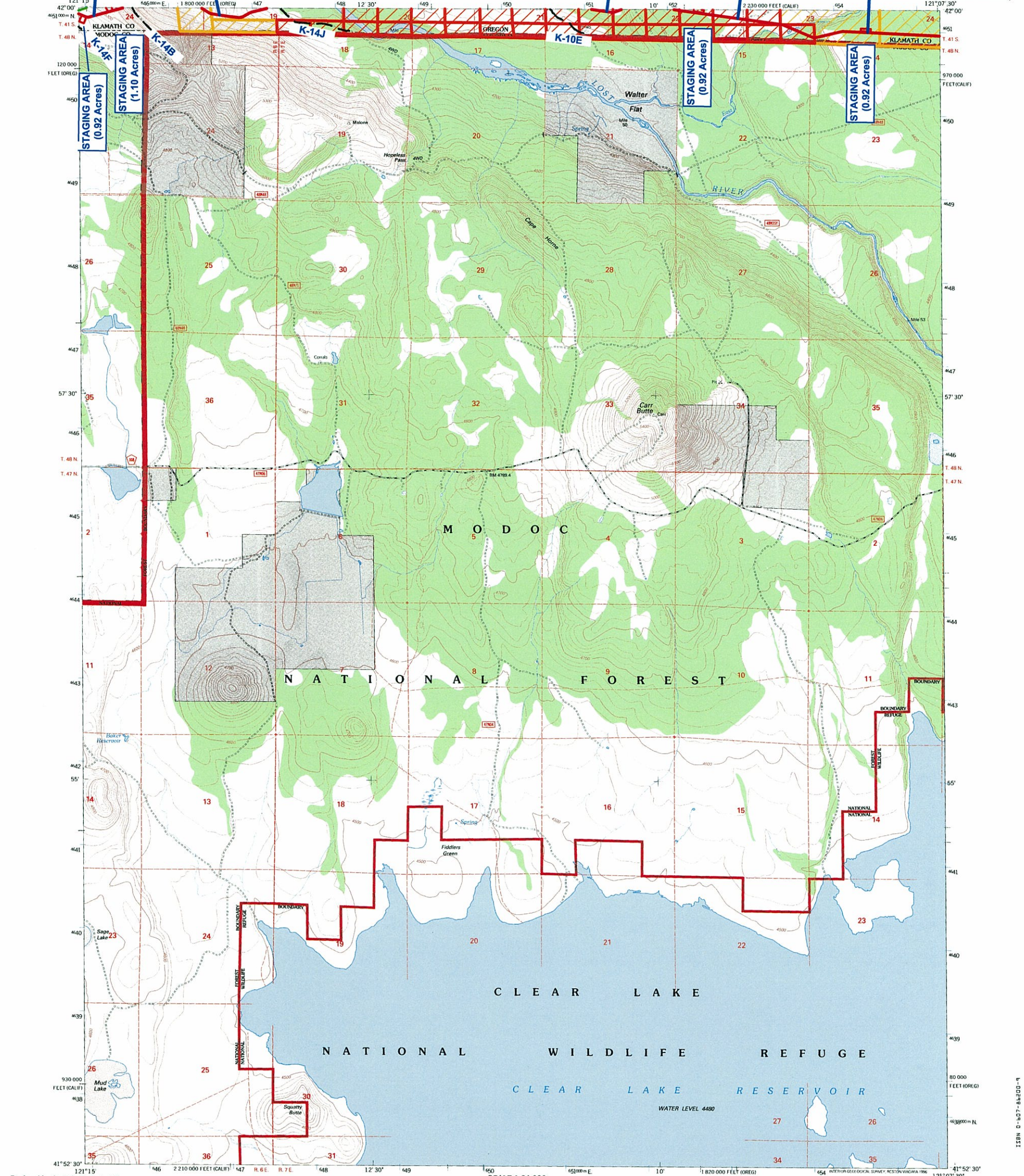


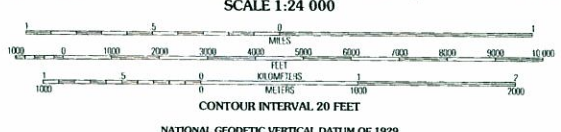
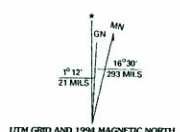
UNITED STATES
DEPARTMENT OF THE INTERIOR
GEOLOGICAL SURVEY

UNITED STATES
DEPARTMENT OF AGRICULTURE
FOREST SERVICE

CARR BUTTE QUADRANGLE
CALIFORNIA-OREGON
7.5-MINUTE SERIES (TOPOGRAPHIC)



Produced by the U.S. Geological Survey
Revised by the U.S. Forest Service
Areas outside the National Forest System lands may not have been revised.
Control by USGS and NOS/NOAA
Compiled from aerial photographs taken 1984.
Partial field check by U.S. Forest Service 1993.
North American Datum of 1927 (NAD 27). Projection and 10 000-foot ticks:
California coordinate system, zone 1, and Oregon coordinate system, south zone
(Lambert Conformal Conic).
Blue 1000-meter Universal Transverse Mercator ticks, zone 10.
North American Datum of 1983 (NAD 83) is shown by dashed corner ticks.
The values of the shift between NAD 27 and NAD 83 for 7.5-minute
intersections are obtainable from National Geodetic Survey NADCON software.
Non-National Forest System lands within the National Forest
Inholdings may exist in other National or State reservations.
This map is not a legal land line or ownership document. Public lands are
subject to change and leasing, and may have access restrictions; check
with local offices. Obtain permission before entering private lands.



HIGHWAYS AND ROADS

Interstate		Primary highway	
U.S.		Secondary highway	
State		Light-duty road	
County		Paved	
National Forest, suitable for passenger cars		Gravel	
National Forest, suitable for high clearance vehicles		Dirt	
National Forest		Unimproved, 4 wheel drive	
		Trail	
		Gate	

LEGEND

- Proposed Ruby Pipeline
- Access Roads
- Staging Areas / Sites
- Mile Posts

- Bureau of Land Management Land
- Bureau of Reclamation Land

THIS MAP COMPLIES WITH NATIONAL MAP ACCURACY STANDARDS
FOR SALE BY U.S. GEOLOGICAL SURVEY
DENVER, COLORADO 80225 OR RESTON, VIRGINIA 22092
A FOLDER DESCRIBING TOPOGRAPHIC MAPS AND SYMBOLS IS AVAILABLE ON REQUEST

FERC FILING
July 17, 2009

RUBY PIPELINE LLC

FERC ROUTE MAP

RUBY OREGON
Sheet 113A

****NOTE****
LAND DATA IS FOR REFERENCE PURPOSES ONLY.
NOT INTENDED FOR LEGAL DESCRIPTION.