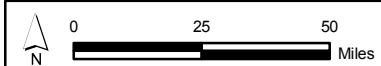
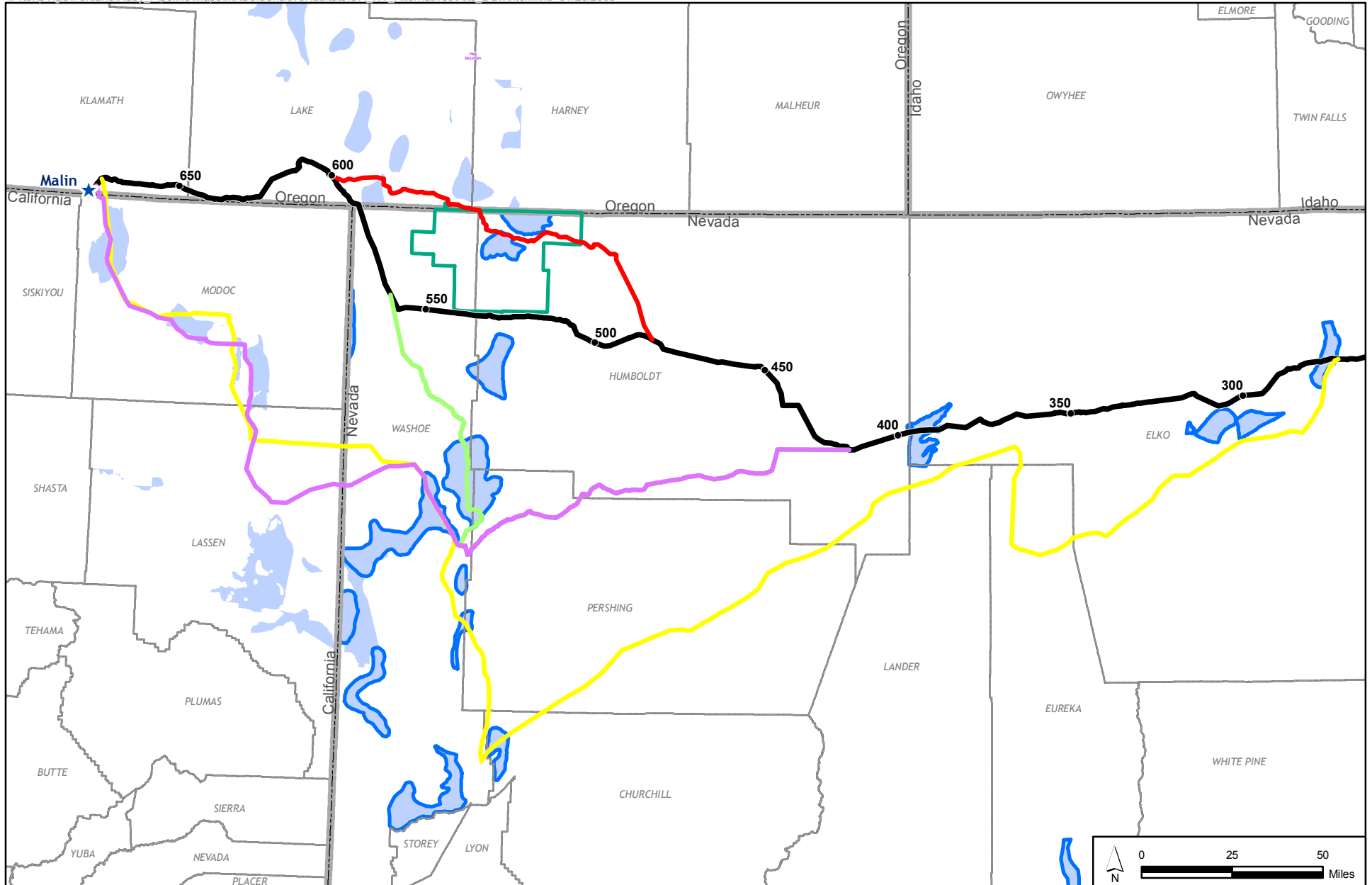
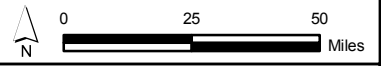
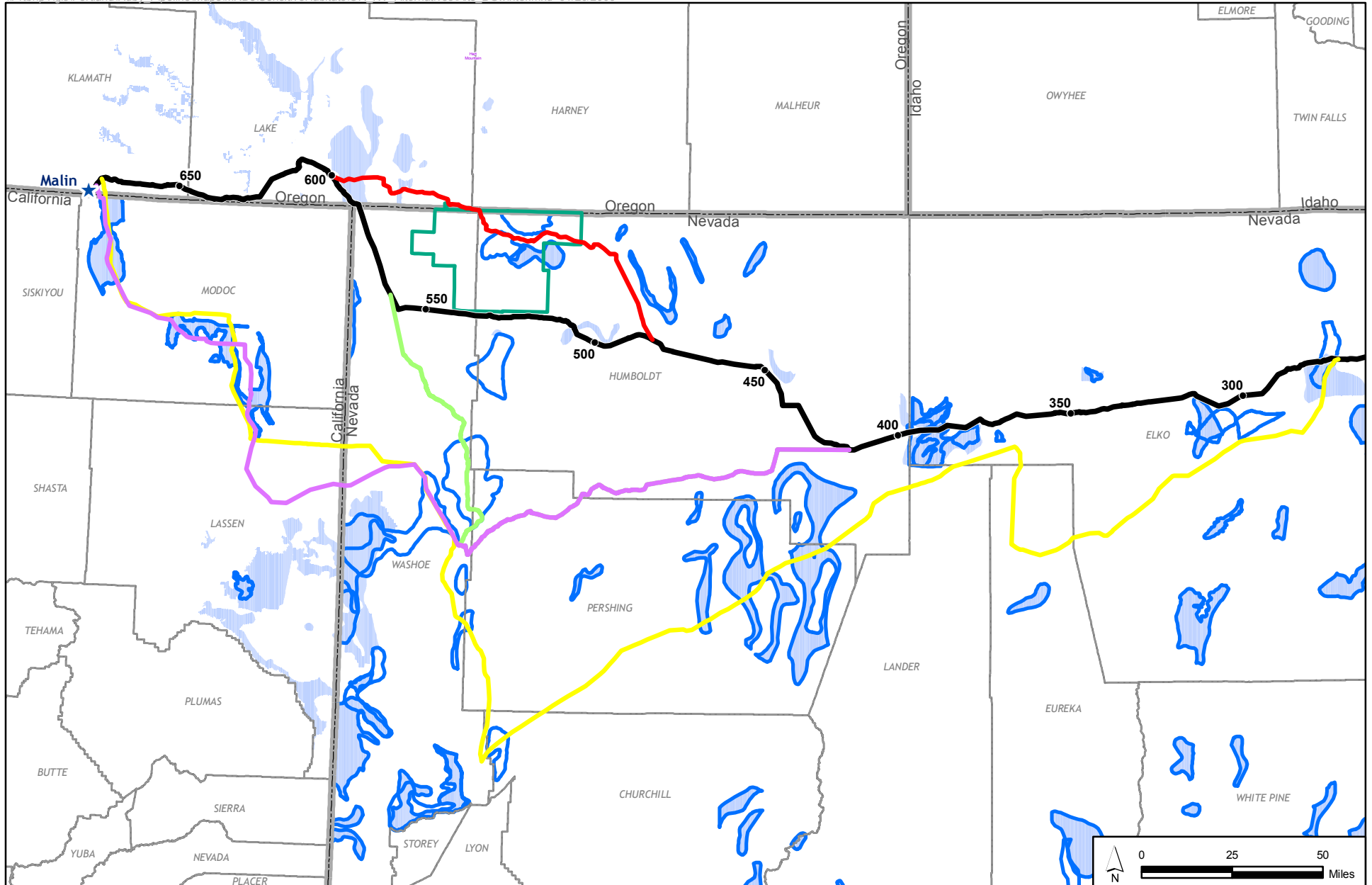


**Appendix 10C-1**  
**Sage Grouse Leks and**  
**Winter Habitat Data**  
**January 2009**  
**Ruby Pipeline Project**



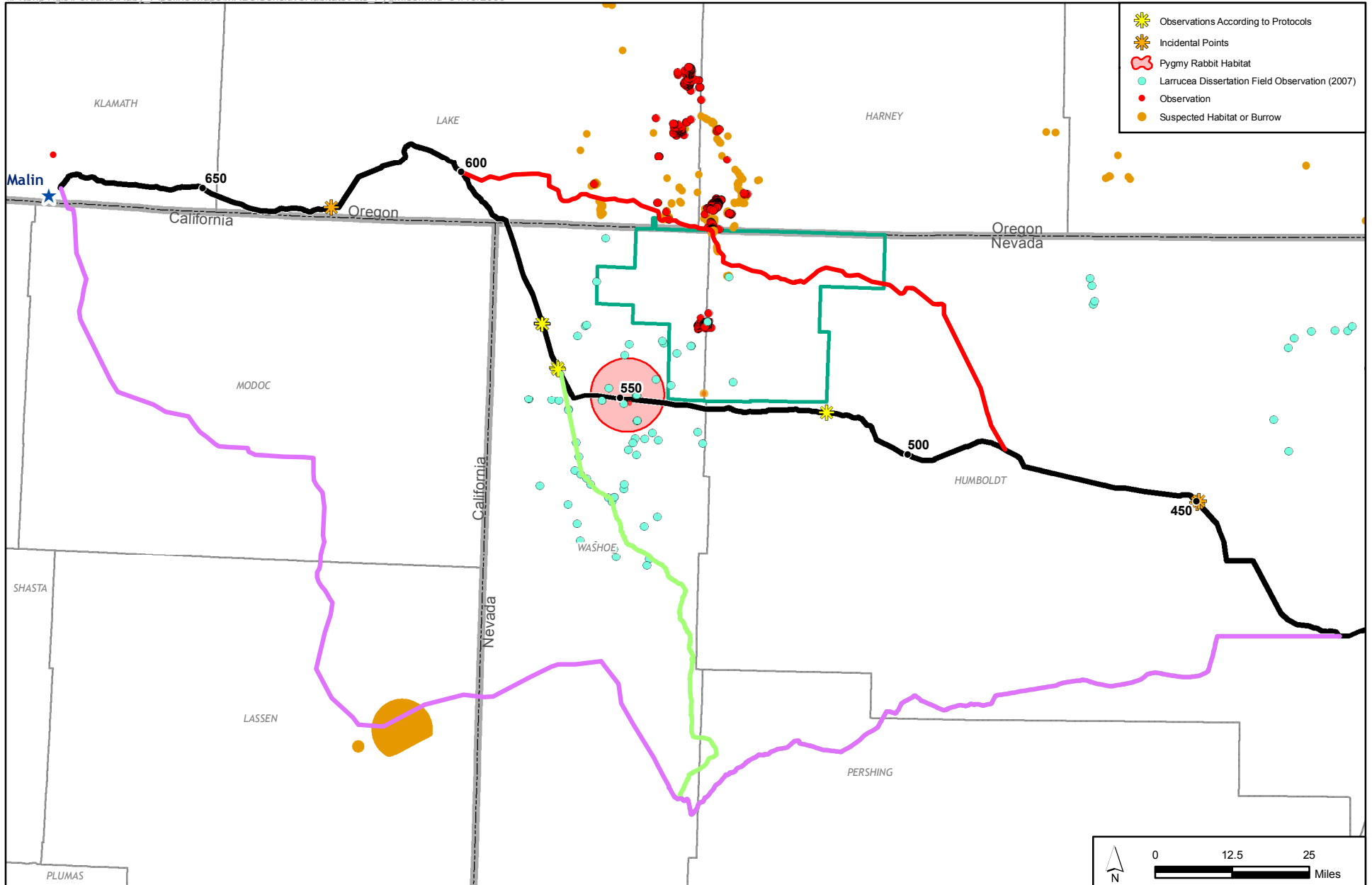
- Mile Post
- Proposed Route (Nov 26 2008)
- Sheldon Alternative
- Black Rock Alternative
- Jungo Tuscarora Alternative
- West Wide Corridor Alternative
- ▭ National Wildlife Refuge
- State Boundary
- County Boundary
- ▭ Pronghorn Crucial Winter Range Habitat
- ▭ Pronghorn Winter Habitat

**Appendix 10C-2**  
**Pronghorn Antelope**  
**Winter Habitat Data**  
**January 2009**  
**Ruby Pipeline Project**



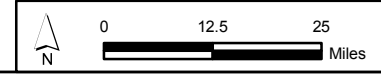
- |                                |                                  |                            |  |
|--------------------------------|----------------------------------|----------------------------|--|
| • Mile Post                    | — Sheldon Alternative            | ▭ National Wildlife Refuge | ▭ Mule Deer Crucial Winter Range Habitat |
| — Proposed Route (Nov 26 2008) | — Black Rock Alternative         | — State Boundary           | ▭ Mule Deer Winter Habitat               |
|                                | — Jungo Tuscarora Alternative    | --- County Boundary        |  |
|                                | — West Wide Corridor Alternative |                            |  |

**Appendix 10C-3**  
**Mule Deer**  
**Winter Habitat Data**  
**January 2009**  
**Ruby Pipeline Project**

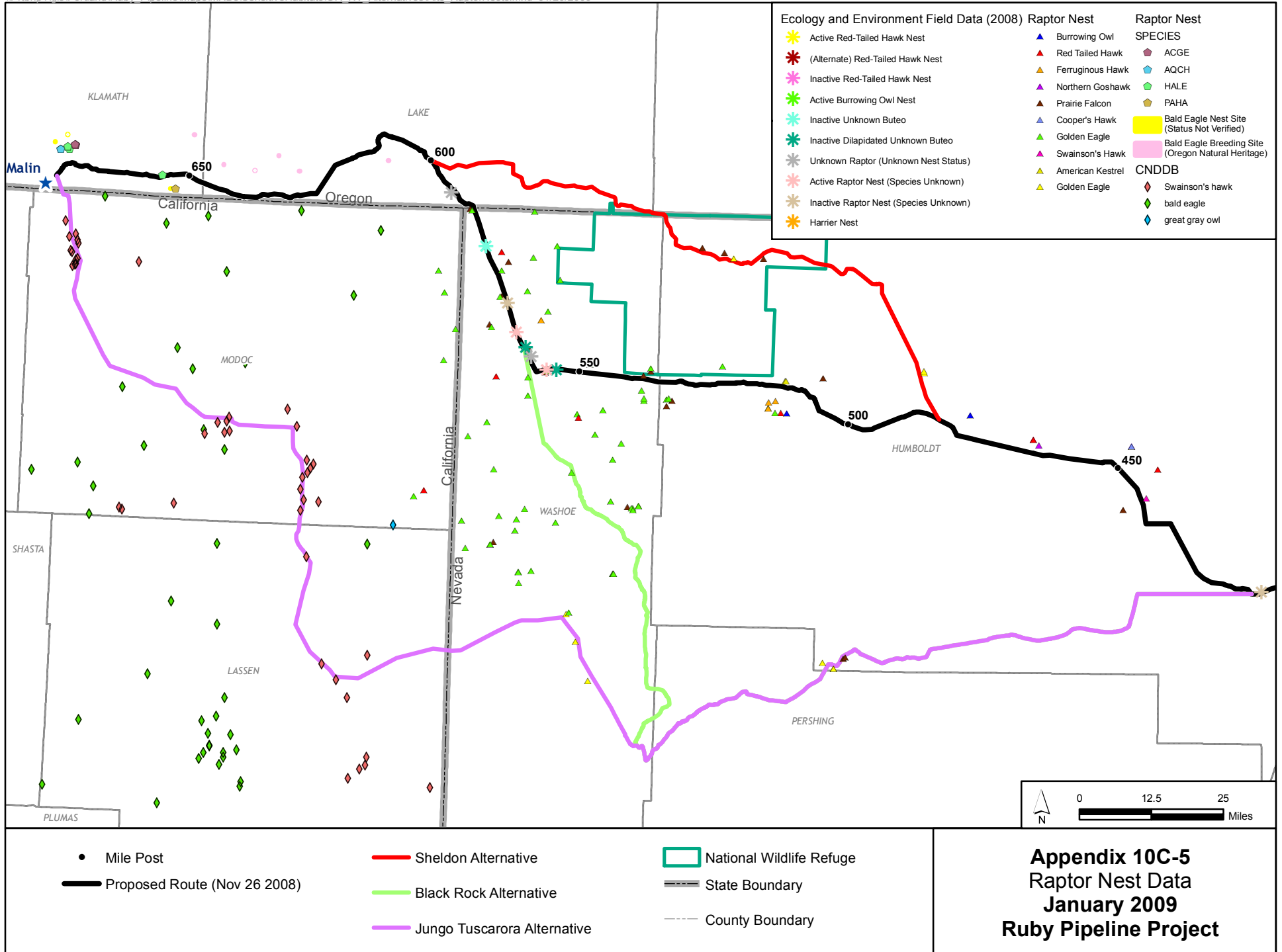


- Observations According to Protocols
- Incidental Points
- Pygmy Rabbit Habitat
- Larrucea Dissertation Field Observation (2007)
- Observation
- Suspected Habitat or Burrow

- Mile Post
- Proposed Route (Nov 26 2008)
- Sheldon Alternative
- Black Rock Alternative
- Jungo Tuscarora Alternative
- National Wildlife Refuge
- State Boundary
- County Boundary



**Appendix 10C-4  
Pygmy Rabbit  
Habitat Data  
January 2009  
Ruby Pipeline Project**



**Appendix 10C-5  
Raptor Nest Data  
January 2009  
Ruby Pipeline Project**